

Section II.

TM9-2815-210-34P

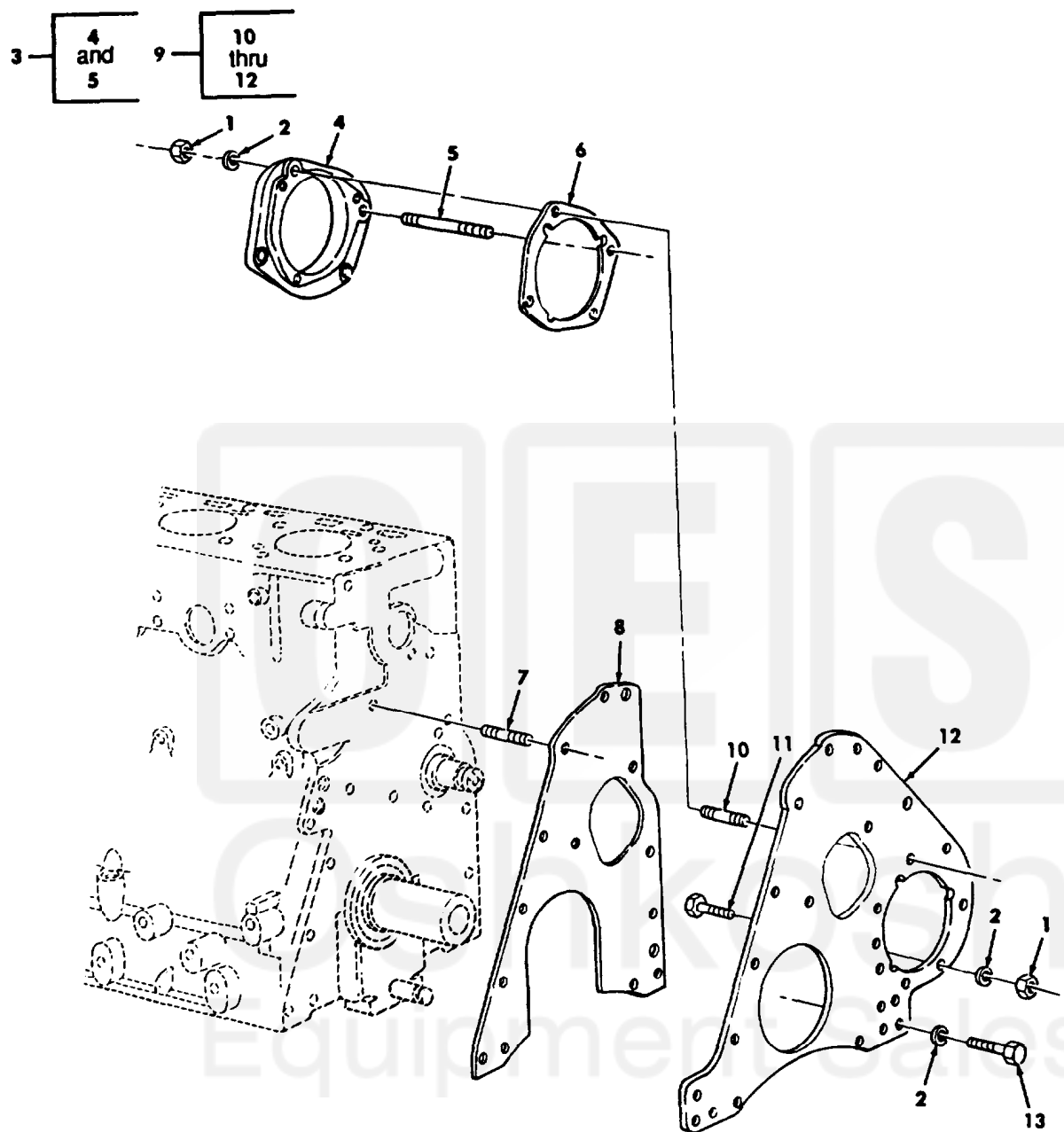


Figure 10. Crankcase, Front Plate, and Related Parts.

| SECTION II | | TM9-2815-210-34P | | | | | | |
|------------|----------|------------------|-------|-----------------|--|-----|---------------------------|--|
| (1) | (2) | (3) | (4) | (5) | (6) | (7) | | |
| ITEM No | SMR CODE | NSN | CAGEC | PART NUMBER | DESCRIPTION | MD | USABLE ON CODES (UOC) QTY | |
| | | | | | GROUP 0105 VALVES, CAMSHAFTS, AND TIMING SYSTEM | | | |
| | | | | | FIG.10 CRANKCASE, FRONT PLATE, AND RELATED PARTS | | | |
| 1 | PAFZZ | 5310007320558 | 96906 | MS51967-8 | NUT,PLAIN,HEXAGON | | 4 | |
| 2 | PAFZZ | 5310009594675 | 96906 | MS35340-46 | WASHER,LOCK | | 10 | |
| 3 | PAFZZ | 2910001793546 | 19207 | 10935553 | ADAPTER,FUEL PUMP | | 1 | |
| 4 | PFFZZ | 2815004209062 | 19207 | 10889776 | .ADAPTER,FUEL INJECT | | 1 | |
| 5 | PAFZZ | 5307004439865 | 19207 | 10898712 | .STUD,PLAIN | | 2 | |
| 6 | PAFZZ | 5330008629064 | 19207 | 10889723 | GASKET PART OF KIT P/N 57K1319 | | 1 | |
| 7 | PAFZZ | 5307009037674 | 19207 | 7375681-1 | STUD,PLAIN | | 1 | |
| 8 | KFHZZ | | 19207 | 10889737 | GASKET PART OF KIT P/N 57K1319 | | 1 | |
| 9 | PFHZZ | 2815001361200 | 19207 | 10889744-1 | PLATE ASSEMBLY, END | | 1 | |
| 10 | PAFZZ | 5307009353695 | 19207 | 7376342 | .STUD,PLAIN | | 2 | |
| 11 | PAFZZ | 5305013510797 | 96906 | MS90725-73 | .SCREW,CAP,HEXAGON H | | 2 | |
| 12 | PAFZZ | 2815001361199 | 19207 | 10889739 | .COVER,TIMING GEAR,I | | 1 | |
| 13 | PAFZZ | 5305000680510 | 80204 | B1821BH038C100N | SCREW,CAP,HEXAGON H | | 6 | |
| | | | | | END OF FIGURE | | | |

